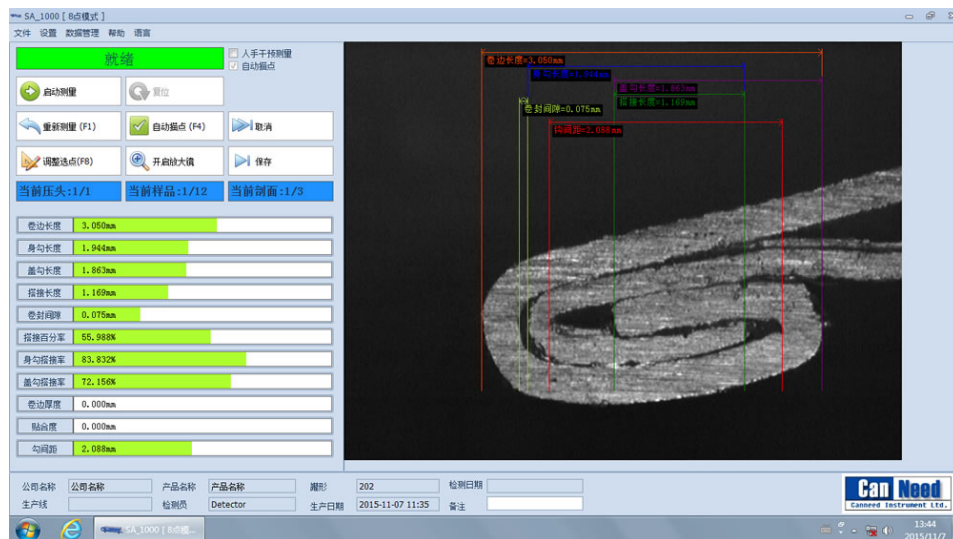


# SeamSight®-SA-1000



## Super Full Automatic Seam Monitor

Has applied for and been granted patents for inventions.



## Auto sampling, Auto can cutting, Auto measurement Integrated Full Auto Seam Measuring System

- Easy to use, much safer, lower noise.
- Automatic sampling, auto can cutting, auto measurement.
- Reliable, durable, minimal maintenance.
- Higher efficiency, more accuracy, avoiding human error.

CanNeed and Seam Sight are the registered trademarks of CanNeed Instrument Ltd.

## Common Problems of Traditional Seam Monitor











<p>Cut cans with a saw.</p> 	<p>Noise</p> 	<p>High-pitched noise,</p> 
<p>The saw at a high speed.</p> 	<p>Danger</p> 	
<p>Pressing the metal piece on the cutting surface into the can and cleaning the cutting surface with a rubber.</p> 	<p>Injury</p> 	
<p>Different operators causing different measurement results.</p> 	<p>Error</p> 	
<p>Be restricted to those who are capable of operation.</p> 	<p>Limitation</p> 	
<p>Manual location of every cutting surface to get the image.</p> 	<p>Time-consuming</p> 	


Are you still using the old-fashioned method of manual can cutting to perform measurements on seam?

# SeamSight®-SA-1000

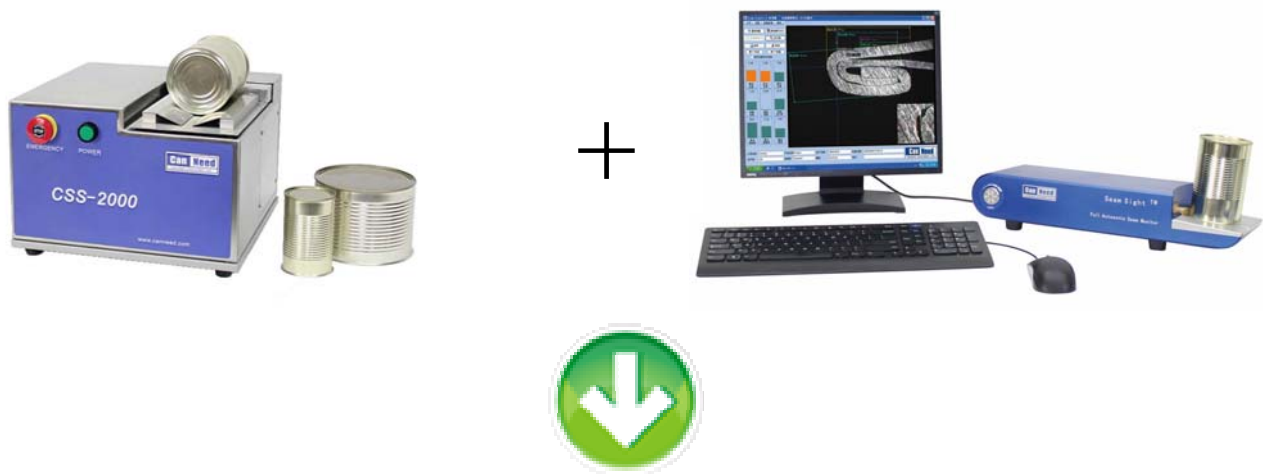
A Combination of auto sampling, auto can cutting and auto measurement

## Advanced Features:

1. Cutting samples in a totally sealed cavity causing much low noise.	<b>Low Noise</b> 	
2. Innovative invention of automatic can cutting and measurement seam monitor to replace the old manual can cutting measurement. 3. Extreme safety and avoids the risk of injury resulted from manual can cutting.	<b>Safe</b> 	
4. Has applied for and been granted a number of patents for inventions. 5. High precision, clear display, equipped with the advanced Golden Lens® video capture device; Repeatable and accurate measurement, adopting the auto cutting method to ensure a clear-cut cross-section without deformation or burrs. 6. Up to 6 points can be cut in one can. 7. The innovative design reduces the operator's amount of work with just a few manual intervention when measuring. All operators should do are just putting in and taking out the empty sample of can.	<b>Accurate</b> 	
8. Any operator will get the same measurement result. 9. Can be used by anyone.	<b>Anyone</b> 	
10. High efficiency. Automatically finished throughout the measurement. 11. Simple, easy-to-use operation. 12. Stable performance and the seam saw made of hard metal alloy is durable. 13. Easy maintenance, drawer type cleaning of iron chippings and shavings, minimal care and maintenance. 14. The client chooses the proper can type along with the order, and chooses one from the following can types: 113, 202, 206, and 209. 15. Chuck number correlation of test data.	<b>Convenient</b> 	

	<p><b>Operation Method:</b></p> <ol style="list-style-type: none"> <li>1. Empty the contents from the sample can; rinse the can with clean water and dry the can;</li> <li>2. Put the can in;</li> <li>3. Start the software, to finish auto cutting and measuring three sections;</li> <li>4. Take out the can.</li> </ol>
---	---

## Break the Tradition of Seam Measurement



## Combine Seam Saw to Seam Monitor



Auto sampling, Auto can cutting, Auto measurement

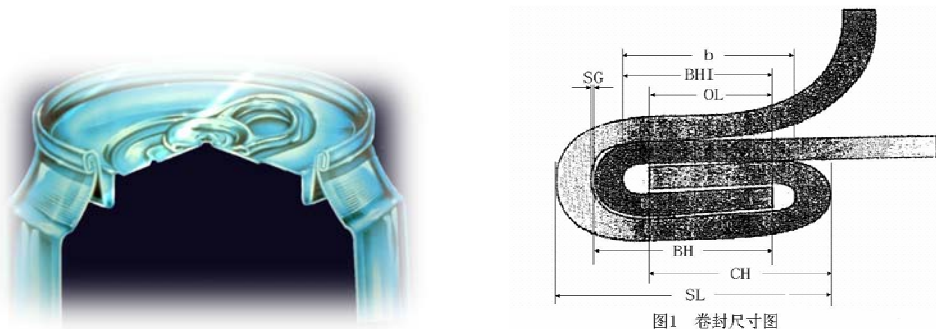


图1 卷封尺寸图



### SeamSight®-SA-1000 Super Full Automatic Seam Monitor, consisting of:

1. SeamSight-SA-1000 Super Full Automatic Seam Monitor
2. CND\_SeamSight-SA 1.0, Full automatic seam measuring software
3. SeamSight-SA-CAL, Calibration piece 2mm
4. 80mm Hard metal alloy seam saws, 2 pc

### Recommending to purchase the following item to ensure the seam monitor working

1. Computer

### Optional for higher efficiency:

1. STG-200-D Seam Thickness Gauge (digital)
2. CSG-200S Countersink Gauge (with data output button)
3. TRC-200 Transporter of Computer
4. CMDI Mitutoyo data line (2 pieces)

### Measurement process of actual seam thickness and countersink:

Before cutting the sample cans, use STG-200-D Seam Thickness Gauge to measure the seam thickness, use CSG-200 Countersink Gauge to measure countersink, data will be transmitted via the data lines, and seam thickness and countersink data are collected automatically to generate reports.



### Technical data:

<ol style="list-style-type: none"><li>1. Automatic sample input, Automatic can cutting, Automatic measurement;</li><li>2. Resolution 0.001mm;</li><li>3. Precision 0.005mm;</li><li>4. Magnification factor: 60 x;</li><li>5. Line positioning magnification factor: 180 x;</li><li>6. 12-holes sample input tool as standard issue;</li><li>7. standard issues: for samples of 211 can, 202 cover, 211 can, 206 cover; 330ml, 500ml; other can types can be customized.</li></ol>	<ol style="list-style-type: none"><li>8. Auto collect seam thickness and countersink digital indicator data;</li><li>9. ignore the interference of outer light sources;</li><li>10. SPC data output;</li><li>11. 5 optional formulae for seaming overlapped rate calculating;</li><li>12. customizable report format;</li><li>13. Hard metal alloy seam saws</li><li>14. Size: L1170XW730XH1070</li><li>15. Power Supply: 220V/110V</li><li>16. Pneumatic supply: 0.4Mpa</li></ol>
--	--

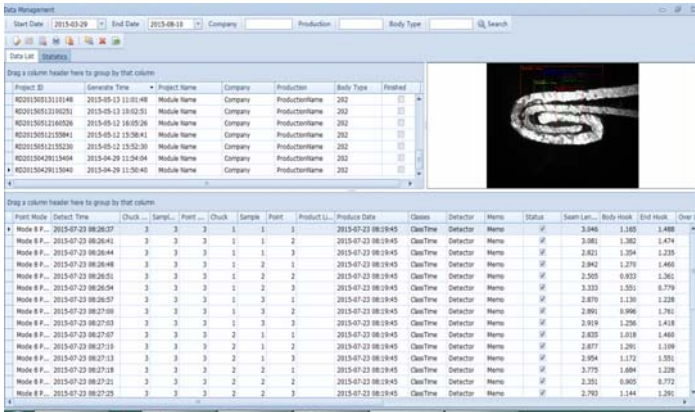
## Features:

1. Automatic can cutting and measurement, efficient and accurate;
2. Equipped with Golden Lens<sup>®</sup> video capture device which interference-free of external light source and ensured the high image definition;
3. SPC compatible, use a data adapter to collect the data from Mitutoyo Digital Indicator (Actual Seam Thickness; Actual countersink);
4. There are 5 calculation formulae of Overlap Rate for clients to choose;
5. Magnifier option enable users to magnify the testing image for a more accurate line positioning.
6. Anti-noise Seam. Avoid causing noise when cutting the samples. Help protect your hearing;
7. Report format can be customized, flexible for different report styles of different companies;
8. 12 Measuring Items: Tightness, Seam Length, Body Hook Length, End Hook Length, Overlap, Seam gap, Overlap rate, Body Hook lapping rate, End Hook lapping rate, On-screen Seam Thickness; Length of Tightness; Actual Seam Thickness; Actual countersink;
9. Software adopted data base management system, measurement results and images saved in the data base;
10. Users can review or re-measure the saved projects at any time;
11. Graph chart statistic function, automatically analyze and compare the measurement results;
12. Data can be exported as an Excel file;
13. Predefine various qualification standards, auto judge and warn whether the results are qualified in every measure;
14. Measurement results and label lines mark directly on the image, results will also display in corresponding field on the screen;
15. Seam image can be printed, stored, no need to retain the sample cans;
16. Provide with calibration piece, calibrate at any time;
17. Use the monochromatic source, make it much more durable.

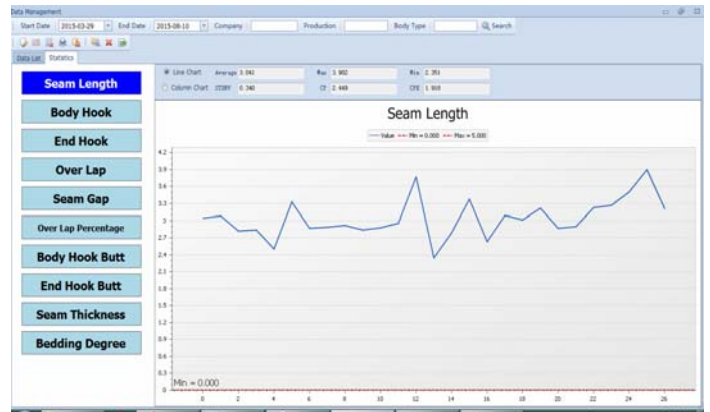
# CND-Seam Sight® -SA 1.0 Software

With the most advanced function: 5 optional formulae for seaming overlapped rate calculating.

Professional seam measuring software (data base management system) with which SPC data statistics and analysis function and SPC data output interface.



Project ID	Generate Time	Project Name	Company	Production	Body Type	Finished
K2015051311048	2015-05-13 11:05:48	Module Name	Company	ProductionName	202	
K2015051311052	2015-05-13 11:05:51	Module Name	Company	ProductionName	202	
K2015051311058	2015-05-12 16:05:26	Module Name	Company	ProductionName	202	
K2015051311084	2015-05-12 15:06:41	Module Name	Company	ProductionName	202	
K2015051311520	2015-05-12 15:52:30	Module Name	Company	ProductionName	202	
K20150429113404	2015-04-29 11:04:04	Module Name	Company	ProductionName	202	
K20150429115040	2015-04-29 11:50:40	Module Name	Company	ProductionName	202	



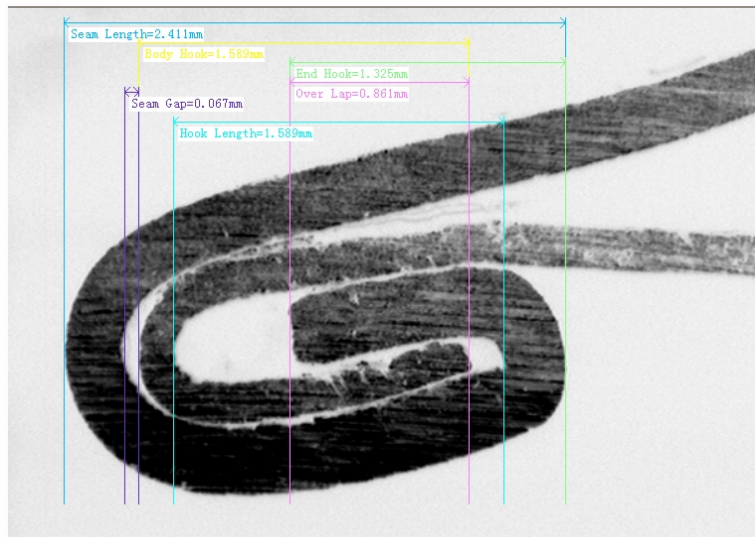
Measurement results and images saved in the data base management system. Convenient for overview and recheck.

Various statistics charts analyze the products quality automatically.

## User-defined report, accord with your own requirement





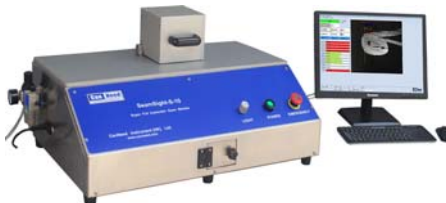

Image Report (also can be printed in reversed colors)

SeamSight Image Report



Company Name :	Company	Seam Length :	2.411	mm
Production Name :	ProductionName	Body Hook :	1.589	mm
Body Type :	202	End Hook :	1.325	mm
Product Name :	2015-07-23 8:19:45	Over Lap :	0.861	mm
Detect Date :	2015-07-23 8:26:37	Seam Gap :	0.067	mm
Product Line :		Over Lap Percentage :	49.296	%
Detector :	Detector	Body Hook But :	73.944	%
Chuck :	1	End Hook But :	75.352	%
Sample :	1	Seam Thickness :	0.000	mm
Point :	1	Counter Sink :	2.500	mm
Detect Mode :	Mode 8 Point	Fit Length :	2.500	mm
Memo :	Memo	Hook Length :	0.000	mm

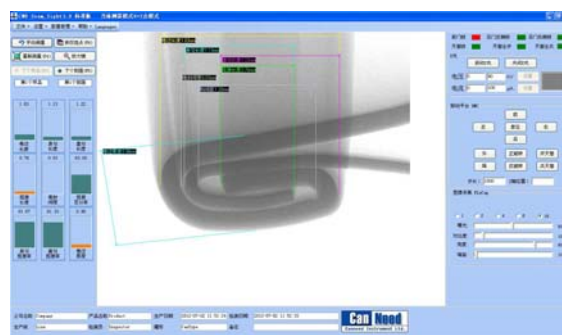
## Seam Monitor Development History

1st Generation	2nd Generation	3rd Generation
Dial Gauge	Digital data displaying	Manual Line positioning
 <p><b>VSM-H</b> Dial gauge, Manual recording and calculating</p>	 <p><b>VSM II</b> Digital data displaying, Manual recording and calculating</p>	 <p><b>VSM6A</b> Manual Line positioning, Auto calculating</p>
4th Generation	5th Generation	6th Generation
Auto Line positioning and data collection, interference-free of external light source	Auto can cutting, auto measurement	Non-destructive, X-ray measurement
 <p><b>Seam Sight® Full Automatic Seam Monitor</b> Auto Line positioning, calculating and data collection, Ignore the interference of outer light sources</p>	 <p><b>SeamSight®-S-10</b> <b>Super Full Automatic Seam Monitor</b> (A combination of can cutter and can tester)</p>	 <p><b>Seam-X-Lab</b> Automatic Seam Scanner</p>

## You Need, We Can!

We try our best, to meet customers' needs!

**We seek for continuous innovation, according to our customers' demands!**



Seam-X-Lab Automatic Seam Scanner (Non-destructive)

CanNeed Instrument Ltd (Hong Kong, Zhaoqing, Dongguan, Shanghai, Wuhai)  
Tel: 0758-2788469, Fax: 0758-2782729, Email: [info@canneed.com](mailto:info@canneed.com), [www.canneed.com](http://www.canneed.com)